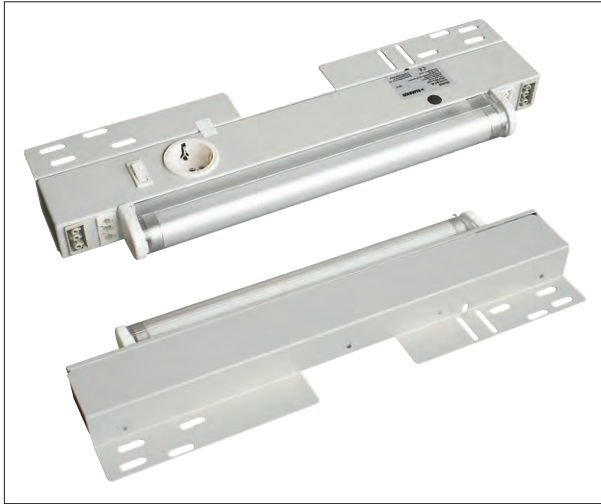


ACCESSORIES FOR SZE3 CABINETS

LIGHTING



**System lighting kit**

Electric light fitting fixed into the horizontal profile of the cabinet's frame. Equipped with a Schuko power socket and a switch.

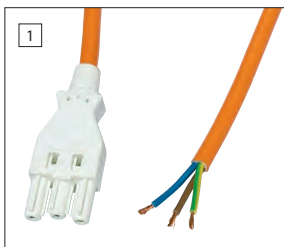
Possibility of direct power supply or use of the connecting cable from an adjacent lighting fitting.  
Possibility of door switch control.

**Material**

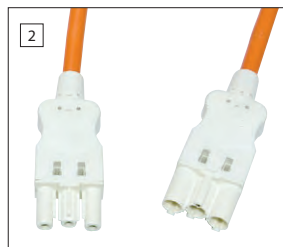
Electric light fitting  
- sheet steel powder painted in RAL 7035 colour  
Mounting bar - Al-Zn coated sheet steel

**Scope of delivery**

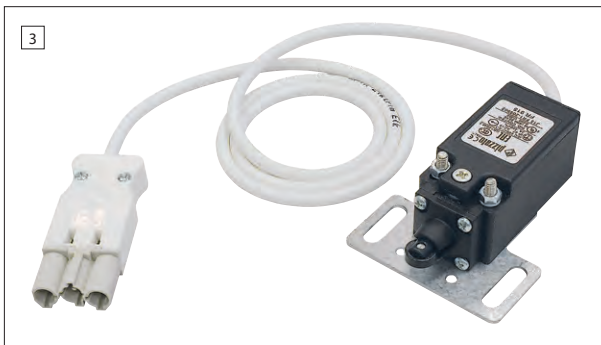
Kit contains: electric light fitting with a 14 W fluorescent lamp, connecting plug, mounting bar (only for the cabinets 600 mm wide), fixing accessories. Connecting cable, power supply cable and door switch set are to be ordered separately.



Power supply cable



Connecting cable



Door switch set with cable

Product name	For cabinet width [mm]	Catalogue number
System lighting kit with fixing accessories	1200, 1000, 800	WZ-6282-39-02-000
System lighting kit with fixing accessories and mounting bar	600	WZ-6282-39-01-000
Connecting cable 0.6 m	600 - 800	M1T-02-0012
Connecting cable 1.0 m	1000 - 1200	M1T-02-0011
Power supply cable 3.0 m		M1T-02-0016
Door switch set with 1.0 m cable		WZ-6282-71-00-000

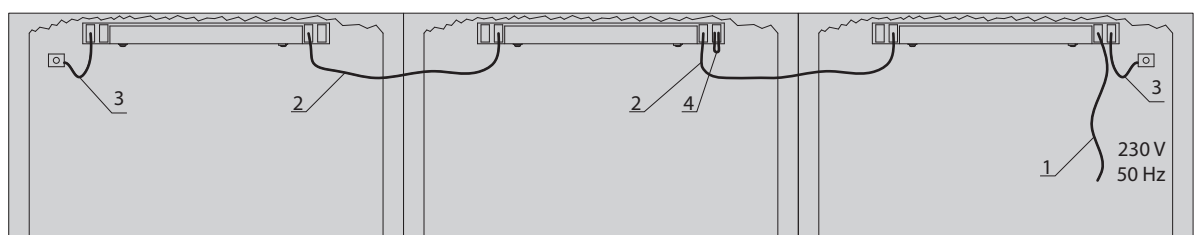
Package: 1 pc.



Connecting plug (instead of the door switch)

**CONNECTION DIAGRAM**

1 - power supply cable, 2 - connecting cable, 3 - door switch set, 4 - connecting plug

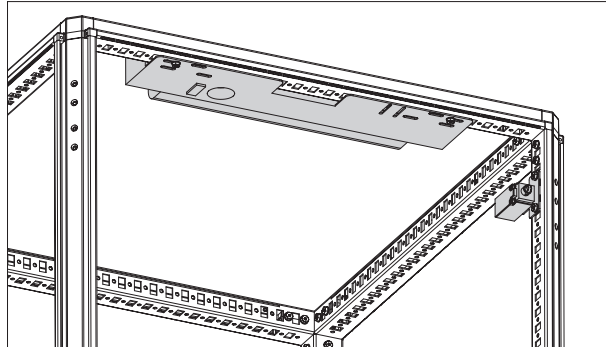
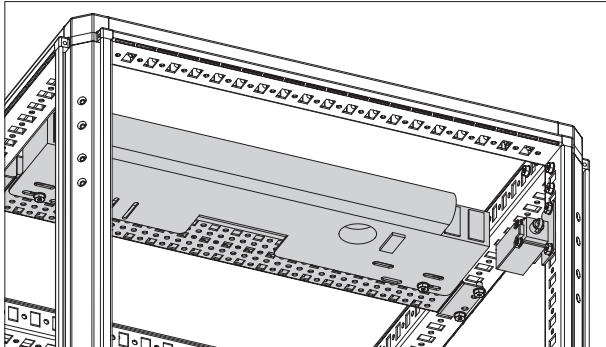


ACCESSORIES FOR SIZE3 CABINETS

LIGHTING

**SYSTEM LIGHTING KIT  
IN SIZE3 CABINET 600 MM WIDE**

**SYSTEM LIGHTING KIT  
IN SIZE3 CABINET 800 MM WIDE OR WIDER**



**Lighting set**

Electric light fitting with mounting bracket for attaching it to:  
 - horizontal or vertical profiles of cabinet frame,  
 - mounting bars type A or B,  
 - or 19" transverse bar.

Total length of the electric light fitting with mounting brackets: 340 mm

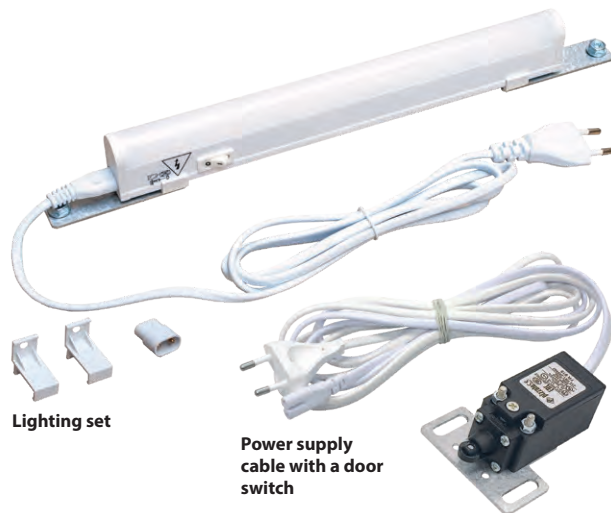
**Material**

- Body of the light fitting - aluminium
- Mounting brackets - Al-Zn coated sheet steel

**Scope of delivery**

Set: electric light fitting with a LED lamp 230 V, 5 W and switch, two mounting brackets, 1.5 m power supply cable, fixing accessories.

The power supply cable equipped with a door switch is to be ordered separately.



Lighting set

Power supply cable with a door switch

Product name	Package	Catalogue number
Lighting set	1 set	WN-6282-99-00-000
Power supply cable 1,6 + 1,0 m with a door switch	1 set	WN-0208-04-10-000-02

**Universal lighting**

LED lamp, 230 V, 5 W, with switch and 1,3 m power cord. Mounted with two magnets. Serial installation possible.

**Material**

Plastic

**Scope of delivery**

Lamp (1 pc.) with power cord.



Product name	Package	Catalogue number
Universal lighting	1 set	M10-06-0644