

ACCESSORIES FOR SZE2 CABINETS

DOORS



Single-leaf door with glass



Lock with double-bit insert (factory installed)

**Doors**

Intended for use instead of front solid door or rear panel.  
Maximum door opening angle: 120°

**Material**

Sheet steel textured powder paint, light grey (RAL 7035), stiffened profiles, brown smoked safety glass

**Scope of delivery**

Complete wing of door with hinges and lock that includes double-bit insert (no handle).

**SINGLE-LEAF DOOR**

For cabinet		Door dimensions		Catalogue number					
height [mm]	width [mm]	H [mm]	W [mm]	Solid door IP 54	Door with glass IP 54	Door with passive ventilation IP 54		Door with glass and passive ventilation IP 54	
				right/left	right/left	right	left	right	left
2000	600	1990	593	WZ-1951-10-02-011	WZ-1951-17-02-011	WZ-1951-40-02-011	WZ-1951-40-10-011	WZ-1951-36-02-011	WZ-1951-36-10-011
	800	1990	793	WZ-1951-10-01-011	WZ-1951-17-01-011	WZ-1951-40-01-011	WZ-1951-40-09-011	WZ-1951-36-01-011	WZ-1951-36-09-011
2200	600	1990	593	WZ-4950-03-02-011	WZ-4950-05-02-011	WZ-4950-16-02-011	WZ-4950-16-04-011	WZ-4950-18-02-011	WZ-4950-18-04-011
	800	1990	793	WZ-4950-03-01-011	WZ-4950-05-01-011	WZ-4950-16-01-011	WZ-4950-16-03-011	WZ-4950-18-01-011	WZ-4950-18-03-011

Package: 1 pc.



ACCESSORIES FOR SIZE2 CABINETS

DOORS

DOUBLE-LEAF DOOR

For cabinet		Door dimensions			Catalogue number					
height [mm]	width [mm]	H [mm]	WR [mm]	WL [mm]	Solid door IP 54		Door with glass IP 54		Door with passive ventilation IP 54	
					right* wing	left* wing	right* wing	left* wing	right* wing	left* wing
2000	1000	1990	493	519,5	WZ-1951-15-02-011	WZ-1951-13-02-011	WZ-1951-52-02-011	WZ-1951-54-02-011	WZ-1951-59-02-011	WZ-1951-57-02-011
	1200	1990	593	619,5	WZ-1951-15-01-011	WZ-1951-13-01-011	WZ-1951-52-01-011	WZ-1951-54-01-011	WZ-1951-59-01-011	WZ-1951-57-01-011
2200	1000	1990	493	519,5	WZ-4950-10-02-011	WZ-4950-08-02-011	WZ-4950-14-02-011	WZ-4950-12-02-011	WZ-4950-22-02-011	WZ-4950-20-02-011
	1200	1990	593	619,5	WZ-1951-15-01-011	WZ-1951-13-01-011	WZ-1951-52-01-011	WZ-1951-54-01-011	WZ-1951-59-01-011	WZ-1951-57-01-011

Package: 1 pc. (wing)

\*) when facing the structure



Door stop

Protects hinges from damage.  
Fixed into the door's frame and cabinet's frame.  
In the case of self-assembly, it is necessary to punch two 6 mm holes in indicated positions.

Material

Galvanised sheet steel

Scope of delivery

Door stop with fixing accessories for mounting into the cabinet.



Package	Catalogue number
1 pc.	WZ-1951-32-00-000

## ACCESSORIES FOR SZE2 CABINETS

## DOORS • ROOF AND SIDE PANELS

**Swing handle with cylinder insert for the door's lock**

For applying in the cabinet instead of the standard pattern that includes double-bit insert.

**Material of the body**

Plastic

**Scope of delivery**

Swing handle and cylinder are to be ordered separately.

Product name	Package	Catalogue number
Swing handle without cylinder insert	1 pc.	M1H-01-0024
Cylinder insert for swing handle + 1 key	1 set	M1H-02-0028



1 - flushed side panel



2 - external side panel

**Side panels**

Available in two options:

- 1) flushed side panels - do not affect overall dimensions of the cabinet, also used as partition if cabinets are bayed.
- 2) external side panels - expanding the cabinet by 25 mm on each side.

All side panels are equipped with PU sealing gasket and stud-bolts for earthing cables.

**Material**

Sheet steel powder painted in RAL 7035

**Scope of delivery**

2 side panels (flushed or external) with fixing accessories for mounting into the cabinet.

For cabinet		Catalogue number	
height [mm]	depth [mm]	Flushed side panels	External side panels
2000	400	WZ-1951-09-13-011	WZ-1951-07-29-011
	500	WZ-1951-09-03-011	WZ-1951-07-07-011
	600	WZ-1951-09-02-011	WZ-1951-07-06-011
	800	WZ-1951-09-01-011	WZ-1951-07-05-011
2200	500	WZ-4950-23-03-011	WZ-4950-24-07-011
	600	WZ-4950-23-02-011	WZ-4950-24-06-011
	800	WZ-4950-65-01-011	WZ-4950-24-05-011

Package: 2 pc.

**Note:**

Possibility to equip side panels with snapped filter fans and exhaust filter - see page 54.



ACCESSORIES FOR SIZE2 CABINETS

ROOF AND SIDE PANELS

**Solid roof**

- Each cabinet can be equipped with a solid roof in two widths:
- 1) roof for cabinet with flushed side panels (roof's width in accordance with cabinet's frame width).
  - 2) roof for cabinet with external side panels (the roof's width expanded by 50 mm in comparison with the cabinet's frame).

Roof extends the overall height of the cabinet by 41.5 mm. There is 5 mm gap under installed roof.

**Material**

Sheet steel powder painted in RAL 7035

**Scope of delivery**

Roof with 4 fixing/spacer bolts for mounting. (Assembly screws M12 are delivered with the cabinet.)



For cabinet		Catalogue number	
width [mm]	depth [mm]	Roof for cabinet with flushed side panel	Roof for cabinet with external side panels
600	400	WZ-1951-27-14-011	WZ-1951-28-14-011
	500	WZ-1951-27-13-011	WZ-1951-28-13-011
	600	WZ-1951-27-12-011	WZ-1951-28-12-011
	800	WZ-1951-27-11-011	WZ-1951-28-11-011
800	400	WZ-1951-27-10-011	WZ-1951-28-10-011
	500	WZ-1951-27-09-011	WZ-1951-28-09-011
	600	WZ-1951-27-08-011	WZ-1951-28-08-011
	800	WZ-1951-27-07-011	WZ-1951-28-07-011
1000	500	WZ-1951-27-06-011	WZ-1951-28-06-011
	600	WZ-1951-27-05-011	WZ-1951-28-05-011
	800	WZ-1951-27-04-011	WZ-1951-28-04-011
1200	500	WZ-1951-27-03-011	WZ-1951-28-03-011
	600	WZ-1951-27-02-011	WZ-1951-28-02-011
	800	WZ-1951-27-01-011	WZ-1951-28-01-011

Package: 1 pc.

**Perforated roof**

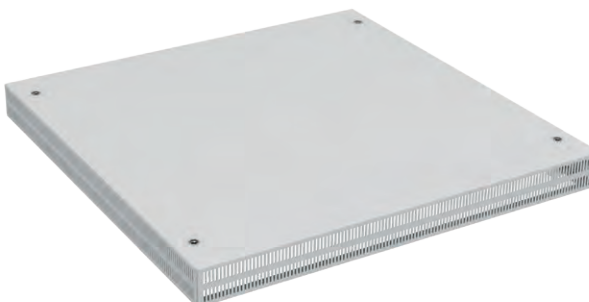
Extends the overall height of the cabinet by 70 mm. Adheres directly to the cabinet frame. Roof width is aligned with cabinet frame width.

**Material**

Sheet steel powder painted in RAL 7035

**Scope of delivery**

Roof with 4 fixing/spacer bolts for mounting. (Assembly screws M12 are delivered with the cabinet.)



For cabinet		Catalogue number
width [mm]	depth [mm]	
800	600	WZ-8215-43-01-011
	800	WZ-8215-43-02-011

Package: 1 pc.